

Resort Hotel



# LOCK AND ENERGY MANAGEMENT SYSTEMS



## Hotel Locks Revisited

THINK of a Lock  
+ ADD the features you would like  
- SUBTRACT what bothers you  
= **SALTO Lock**

## System Description



### NETWORKED LOCKS

Hotel Access Management by Salto (HAMS)™ is a state-of-the-art electronic lock system, featuring distributed intelligence both in the lock and in the key.

Locks are networked to the computer, yet they need no wiring or WIFI infrastructure. The communication link is the intelligent key, it opens the rooms and acts as a 2-way data transporter. It gives you full control of your property right from your PC.

#### HOW?

A simple principle: keycards automatically store and convey information back and forth between locks and the PC. This is done by means of a few on-line download-points strategically located at employee areas. Employees will “touch” that online point as part of their daily routine.

#### BENEFITS

- Lost key cancellation at a “click” of a mouse (no re-programming)
- Control your staff and contractors: all their activity throughout the property is automatically downloaded onto your PC via the network.
- Reporting. Use our software’s “Custom Report Tool” to create your own reports:
  - Staff/contractor activity
  - Former employees trying to access the property
  - Out-of-shift access attempts
  - Low battery report for maintenance
  - “You name it...”
- Investigation tool: if you ever have a legal dispute..., chances are you may want to investigate employee/contractor activity way back (maybe years). All that information is now archived and available in your PC.
- “On-the-fly” changes to your staff/contractor access privileges (no re-programming)
- No more “my-key-doesn’t-work” frustration. The keys cannot demagnetize, they are simply not magnetic.





## ROOM ENERGY MANAGEMENT and IN-ROOM GUEST DETECTION SYSTEM

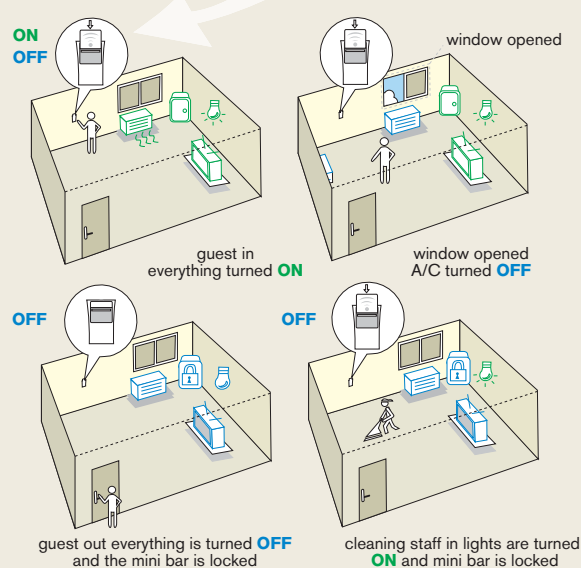
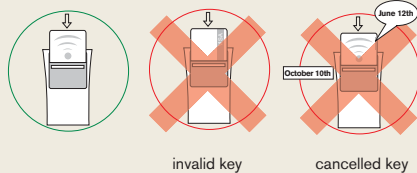
Your owners expect more and so does your guest, we help you beat that expectation.

Each guestroom is equipped with a cardholder on the entrance wall. The online cardholders read keycards and transmit guest or staff presence information to the PC, thus providing you with valuable real time information to manage your staff and serve your guest. That cardholder controls A/C and Lights while the room is unsold or unoccupied to help cut your power bill.



### BENEFITS

- Guest in-room detection:
  - Guest locator
  - Don't knock on the door to check if the guest is in. Just "click" your mouse.
  - Plan your cleaning and maintenance work without disturbing your guests
  - Important input for your hotel marketing
- Staff/Contractor locator
- Staff/Contractor "time-spent-per-room" report to help your operations efficiency
- Energy management for unsold rooms. Optionally for unoccupied rooms.
- Check-in/Check-out automatically triggers energy management patterns in the room
- List of "cleaned-&-checked" rooms (ready for check-in)
- Optional minibar module: Lists replenished minibars. Automatically locks/unlocks minibars to prevent minors' or unauthorized staff usage.
- Energy conservation option: automated A/C & Light control for unsold or unoccupied rooms.



## System Layout

- Lobby**  
Front Desk Equipment manages keys, locks, safes, lockers and energy saving devices. Check-in. Back-office access control Employee T&A (located at employee entrance)
- Rooms**  
Guestroom door lock  
In-room safe  
Energy management: A/C and Light control  
In-room Presence Detection  
Minibar control: automatic lock/unlock (sensitive to guest or staff presence)
- Bar & Restaurant**  
Key as guest ID  
POS reads key guest to post charges
- Golf Course**  
Key as guest ID  
Access Door  
Electronic lockers  
Changing room  
POS reads key guest to post charges
- Fitness Center & Spa**  
Key as Guest ID  
Access door  
Electronic Lockers  
Changing room



**Salto International**

Salto Systems HQ, Spain · Salto Systems Inc, Atlanta · Salto Systems Ltd, Birmingham · Salto Asia-Pacific, Kuala Lumpur  
Salto Canada, Montreal · Salto México, Cancún · Salto Middle East, Abu Dhabi · Salto Portugal, Oporto

**System  
Components**



**NETWORKED ELECTRONIC LOCKS**

Contactless Radio-wave key opening.  
Perpetual Clock & Calendar.  
2-way communication with PC.  
Solid Stainless Steel construction.  
Extreme weather resistance: concealed outer trim and key reader - no card slot.  
Bolt-on installation, no wires required.  
Battery powered.



**ON-LINE ACCESS POINT READERS  
(DOWNLOAD-POINTS)**

Surface mounted.  
Ethernet/WIFI connectivity.



**IN-ROOM ENERGY MANAGEMENT**

Saves power on unsold and unoccupied rooms (user defined patterns).  
Real time "in-room presence detector".  
Know who is in: guest, staff, contractor,...  
Surface mounted.  
Reads keys.



**FRONT DESK EQUIPMENT**

Management Software. PMS & POS interfaces.  
Key encoder.  
Hand held lock programmer: maintenance tool, emergency opening...



**ELECTRONIC LOCKERS**

2 operating modes: dedicated to guest (ie: Suite guests, personal trainer) or free-assignment for ordinary guests.  
Operated by the room key.  
Security features.



**CONTACTLESS SMART  
CARD TECHNOLOGY**

I-m-a-g-i-n-e: Imagine a wet key covered by sand that works and does not damage the lock. Imagine a key you may wear as a bracelet so you do not have to worry about taking your wallet to the beach. Imagine a key that securely posts charges to your portfolio. Imagine a key kids can't lose. Imagine a key that can't de-magnetize.

You know smart cards. Now imagine your don't need to touch the door to unlock it. It can even become a "hands-free" operation (\*).

Both the key and the lock have a built-in antenna to perform a 2-way communication

Communication is performed via FCC compliant 13.56 MHz radio frequency.

Keys are compliant with ISO standards.

The keys can now take any shape. No need to stick to the traditional keycard format.

Extreme abuse resistance: water, salt, heat/cold, dust...

Battery-free operation: keys use the locks' power to transmit and store information

Reusable: keys can be reprogrammed over and over again

All-Inclusive?: ask for our bracelet & POS solutions



Partner:

