

Ultra Luxury Modern Hotel | networked locking system



RFID
Hotel

WIRE-FREE NETWORKED ACCESS CONTROL SYSTEMS

SALTO® Systems:

A single system that allows you to integrate all your physical security needs through stylish, reliable, wire-free networked locks.



System Description

Networked Locks

This revolutionary Networked Locking System is powered by the SALTO Virtual Network (SVN). The SVN is a unique combination of on-line and off-line stand-alone locks and readers that are networked to a principal computer. Its features can only be matched by on-line systems that need wiring or a Wi-Fi infrastructure. SALTO's SVN does not require such infrastructures.

The system basics allow you to:

- Control the entire property right from your computer.
- Perform dynamic access changes at any given time.
- Eliminate the costs of wiring and Wi-Fi infrastructures.

How?

A simple principle: key cards automatically store and convey information back and forth between the locks and your computer. This is done by the means of a few on-line download points or "Hot-Spots" that are strategically located in high traffic areas within the property. The "Hot-Spots" upload and download information that defines guest, staff and even contractor access. They simply "flash" their key cards and continue with their routines.

Benefits

- | | |
|---------------|---|
| COST | <ul style="list-style-type: none">· Monitor on-duty personnel and contractors: track facility maintenance tasks.· Dynamic master keys: "on-the-fly" changes to user access privileges.· Eliminate signing master keys in and out: staff can take their keys home. |
| GUEST COMFORT | <ul style="list-style-type: none">· The end of "my key doesn't work" situations. RFID keys cannot demagnetize.· Smart battery management: batteries won't unexpectedly die.· Remotely re-assign/transfer rooms. |
| SECURITY | <ul style="list-style-type: none">· Centrally manage and record all access activity in the building.· Maximum security keys: encrypted and authenticated; can't be duplicated.· Automated lost key cancellation: at the click of a button.· Manage back of the house doors using the same system.· Custom reporting capabilities:<ul style="list-style-type: none">- Staff/contractor timed activities- Former employees trying to access property- Non-scheduled access attempts |



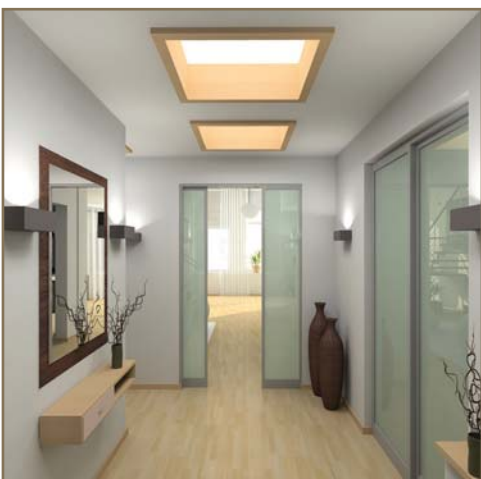
RFID Contactless Technology

- Contactless smart cards and encrypted close proximity radio frequency allow you to open doors without even making contact with the lock.
- Key and lock have built-in antennas that perform a 2-way communication.
- Secured communication is performed via 13.56MHz RFID cards. (Mifare, DESfire, Vicinity)
- Keys come in any shape or form: card, key fob, adhesive tags, phones, watches, wristbands, etc.
- Extreme abuse resistance: water, salt, heat/cold, dust and other environmental agents.
- Battery-free operation: keys use the lock's power to transmit and store information.
- Reusable keys can be reprogrammed over and over again.



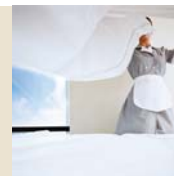
On-line Room Maintenance Reporting System

Each room is equipped with a reader that upon scanning a color coded card, reports maintenance issues from cleaning to replacing a light bulb. This allows you to manage room maintenance more conveniently and ensure the room is ready for your guest.



Salto International

· Salto Systems HQ, Spain · Salto Systems Inc., USA · Salto Systems Ltd., UK · Salto Asia-Pacific, Kuala Lumpur
· Salto Canada · Salto Mexico · Salto Middle East, Abu Dhabi · Salto Portugal · Salto Netherlands



(System Components



Networked Electronic Locks and cylinders

Contactless radio-wave key operation.
2-way communication with your computer.
Solid construction. No maintenance required.
Many finishes (Stainless steel and PVD included) as well as handle types.
Built-in installation. No wires required.
Clock and calendar programming.
Battery operated.



On-line Access Point Readers (Hot-Spots)

Surface mounted.
Ethernet/ Wi-Fi connectivity.



On-line Room Maintenance Reporting System

Contactless radio-wave key operation.
2-way communication with your computer.



Front Desk Equipment

Management software.
Key encoder.
Hand held lock programmer.
PMS & POS interfaces.